

VigorACS SI

Centralized Management System

DrayTek

www.draytek.com

- Supports TR-069 Vigor Series Routers
- Unlimited Network Level to Group CPEs
- Remote Auto Provisioning and Status Monitoring
- Dynamic and Schedulable Service Provisioning
- VPN Wizard for Easy Configuration
- Daily Report and Performance for Review
- System Log System
- Real Time Alarm Management
- Topology Management
- Advance Firmware Management
- Security and User Group Management

VigorACS SI, a powerful centralized management system, let System Integrators manage DrayTek's devices more convenient. TR069-based VigorACS SI with user-friendly interface can help users to maintain the configuration of devices easily. As a "value-added" service provider, the System Integrator can assist user to set up VPN connections, VoIP services and cost down customer maintenance fee by approaching real time message from VigorACS SI.

In addition, the easy-to-understand logic management also can easily let new IT staff on board for analyzing/serving customers. VigorACS System Integrator version simplifies management tasks through product type and functionalities of features such as IPSec/PPTP VPN settings. Less technical background is required to fulfill the VPN environment by using the VPN Wizard than setting up the complex parameters of IPSec or PPTP.

Note: VigorACS SI version is only for Vigor router series compliant with TR-069.

Auto Provision

Filename	Property	Size	LastModify	Directory
	Directory	496	02/24/2010 18:09:04	.
	Directory	536	02/24/2010 18:09:04	./rootGroup
Test_Julia	Directory	340	02/24/2010 18:09:04	./rootGroup
00507FA65010	Directory	49	02/25/2010 15:57:04	./rootGroup
00507FA65020	Directory	392	02/24/2010 18:10:23	./rootGroup
00507FA65030	Directory	424	02/25/2010 14:30:58	./rootGroup
00507FA65040	Directory	592	02/24/2010 18:10:08	./rootGroup
00507FA65050	Directory	592	02/24/2010 18:10:35	./rootGroup
00507FA65060	Directory	624	02/24/2010 21:05:17	./rootGroup
00507FA65070	Directory	784	02/24/2010 21:12:48	./rootGroup
00507FA65080	Directory	48	02/24/2010 18:09:04	./rootGroup
00507FA65090	Directory	528	02/22/2010 17:46:48	./rootGroup
00507FA65100	Directory	128	02/24/2010 18:09:04	./rootGroup
00507FA65110	File	2648306	03/24/2009 22:33:05	./rootGroup
00507FA65120	File	2929148	03/24/2009 22:30:17	./rootGroup
00507FA65130	File	1000000	03/24/2009 08:07:58	./rootGroup

Users can reduce the high cost on administrative and on-site supporting task but still provide high quality service remotely via VigorACS SI. For Multinational company's (MNC) MIS administrator, they can fulfill various operation needs, such as VPN connections, VoIP setting or uploading new applications/profiles for worldwide branches from HQ anytime when the business grows.

System administrator can trigger provision for new uploaded profile, do firmware upgrade and backup/restore configuration of certain CPE at specific time. In addition, Provision Setting can prevent changes of setting in CPE from unexpected modifying, such as Network, VPN, VoIP and Firmware version. Auto provisioning function can also execute the batch profile setting for CPEs by choosing the corresponding user group in Group Management.

Scenarios

Auto provisioning function of VigorACS SI version can satisfy management needs of System Integrators with obtained license from Telco/ISP (figure 1) or only providing value added support (figure 2) to end-users who purchase Vigor routers. Furthermore, VigorACS SI will be capable of any management work of all CPEs spreading in worldwide branch offices from a multinational company such as Figure 3.

Note: CPE here defines as Vigor routers at customer's site.

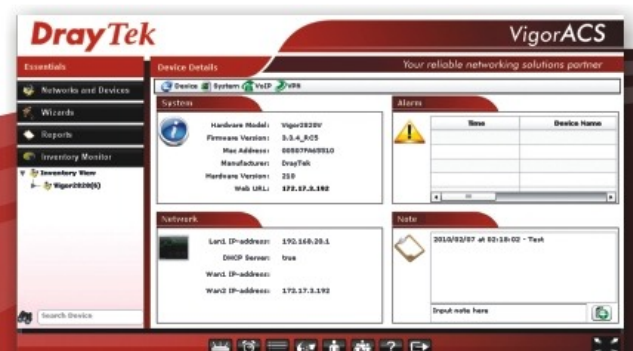
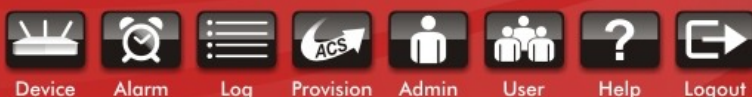


Figure 1: Wholesale Provider

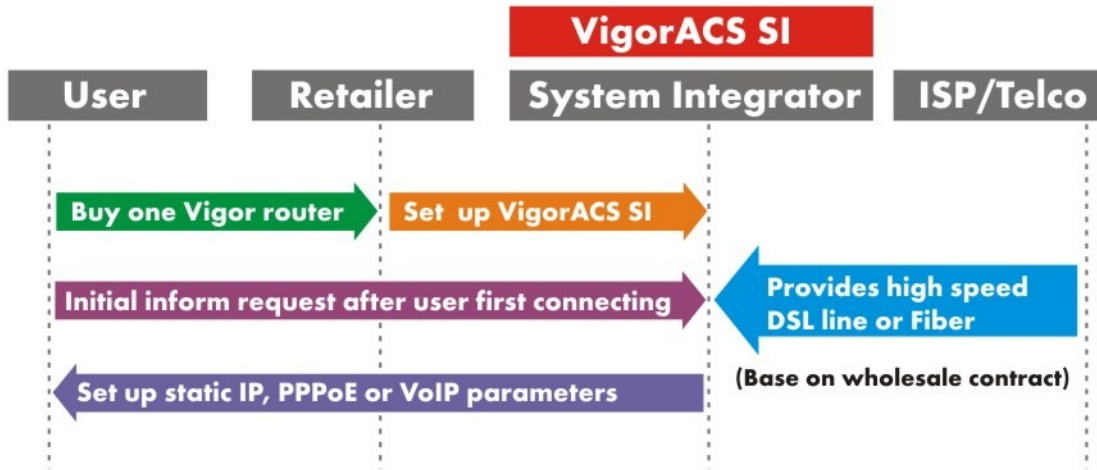


Figure 2: Value Added Support (Remote diagnostic & management)

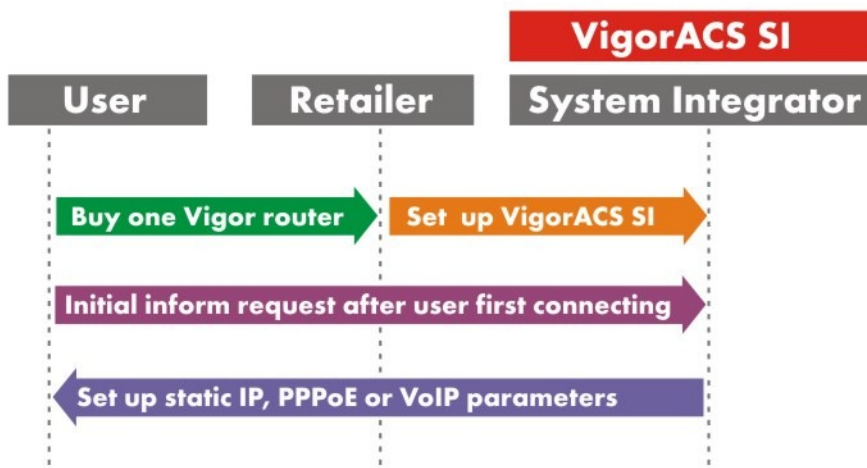
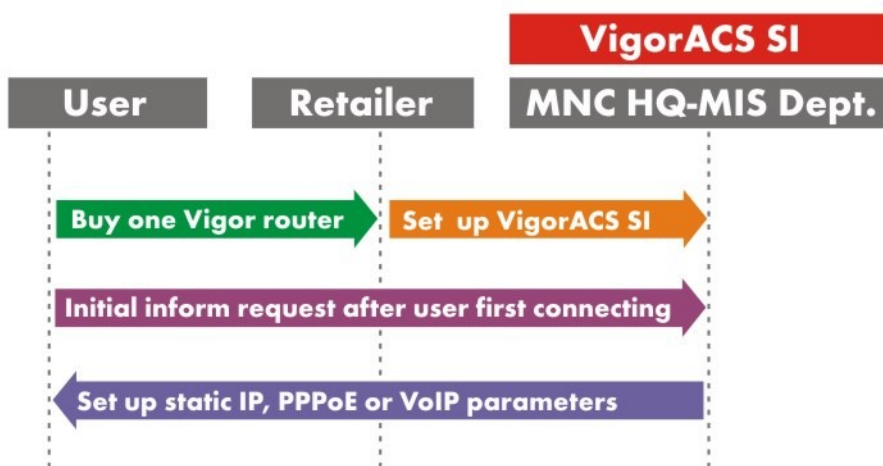


Figure 3: MNC Model (Global management)



Device Management



Easy-to-use wizard settings

VPN wizard embedded with advanced algorithm technique - Circular Layout lets administrators just drag specific CPEs, physically spreading in different locations together in the WUI. Then VigorACS SI would automatically place CPEs to best position for making VPN connection between each others without going through traditional troublesome setting steps. Administrators can choose different types of VPN connection including PPTP and IPSec corresponding to the different network needs of the CPE physical location.

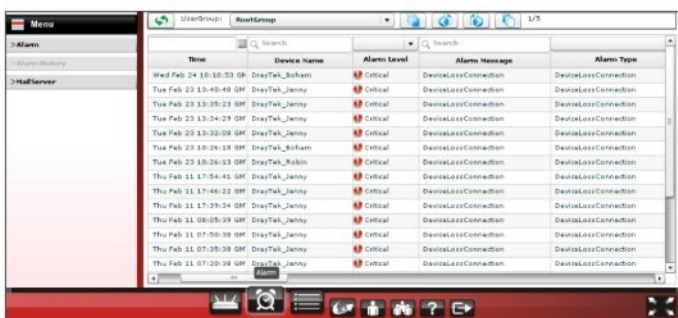
Configuration wizard provides even convenient user interface for backup and restore tasks. Administrators can flexibly set up specific date/time and occurrence timeframe for selected device(s) or group(s).

Firmware wizard is capable for scheduling firmware upgrade date/time or doing immediately.

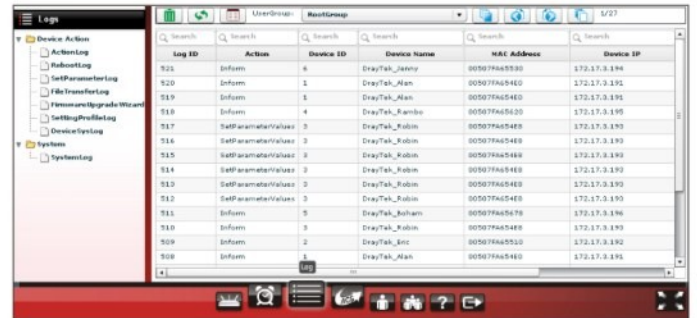
Note: Other wizard functions will be available in future firmware version.

In addition to wizard settings, Performance Management helps administrators to monitor device summary, detail status of individual CPE(s) and generate LAN/WAN static & graph reports, firmware reports and CPE IP overview (LAN/WAN) reports for comprehensive remote monitor & management needs. Network Topology Management allows Admin to see physical location for CPE via Google Map view with device basic information.

Alarm & Log Management



VigorACS SI utilizes Alarm Information section to notify administrator any abnormal situation of managed CPEs for fast reacting to ensure customer satisfaction. Latest alarm will also be displayed in ACS SI homepage to catch administrator's attention for immediate reaction. The types of alarm occurrence, level of alarm, acknowledge status help supervisors evaluate each admin performance based on records displayed in Alarm Information section.



Log view section has two major portions including Device Action and System. Device Action records action, download, reboot, parameter values, object adding and deleting executed by VigorACS SI for traceability. Based on saved records, admin can know exactly what/when has been done to which CPE. System portion will record the modification or changes of the CPE(s) done by VigorACS SI, such as changing network, name of CPE or location of CPE and so on.

User Operation Management

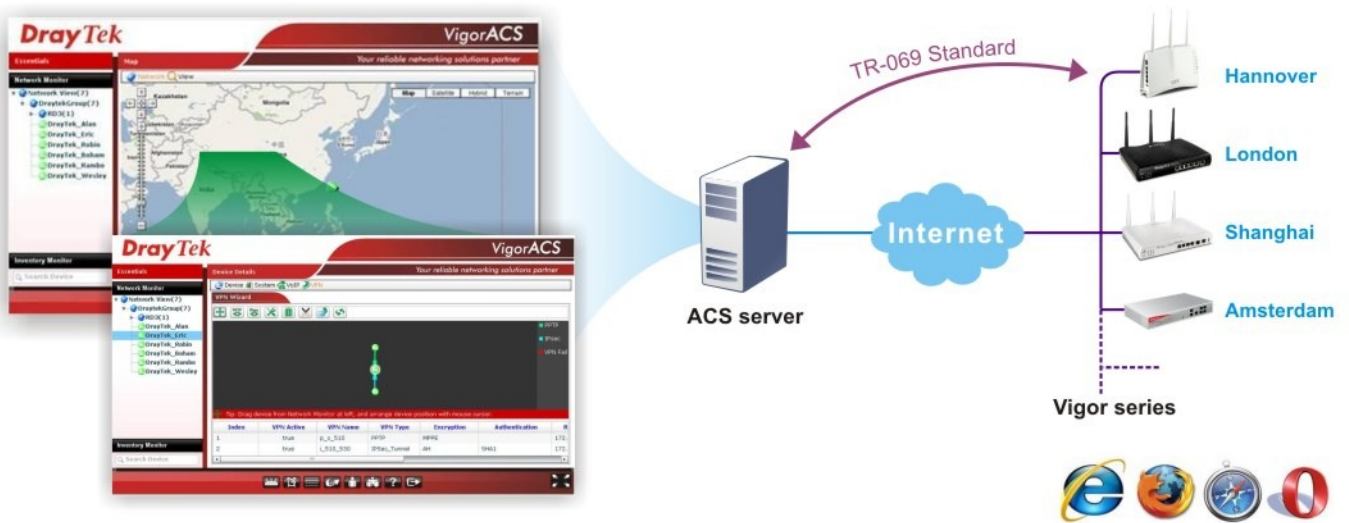


User Operation Management has three-level user authority for different administrators, including (from high to low) System Administrator, user name as root; Administrator, user name as admin; Operator, user name as Operator.

For instance, IT Dept Head or ACS SI license host can be System Administrator with highest authority, senior IT Dept engineer or ACS SI license reseller as Administrator with middle authority covering their responsible user groups and junior IT Dept engineer as Operator with lowest authority for covering only their job-related user group(s).

System Architecture

The following figure shows an overview of the application between VigorACS and CPE devices. With TR-069 protocol, VigorACS SI can easily communicate and manage devices.

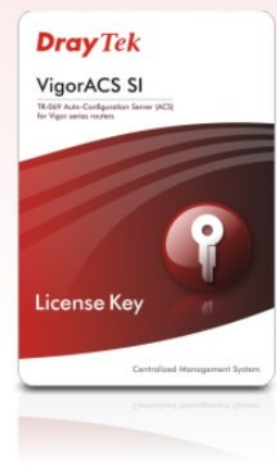


Official Package

What's included in the package

- Quick Start Guide
- CD Manual /Software for installation on Windows (2000/XP/Vista); Linux/Unix

- License Key



Activation on **MyVigor Portal**.

System Requirement

Server	Client	Operating System
Intel® Pentium® 4 CPU 1.0 GHz or above	Adobe Flash Player 9.0	Windows 2003/XP/Vista/7
2 GB DDR2 DRAM or above	Internet Explorer/Firefox/Safari/Opera	Unix/Linux
Hard-disk space required: 80G at least		